

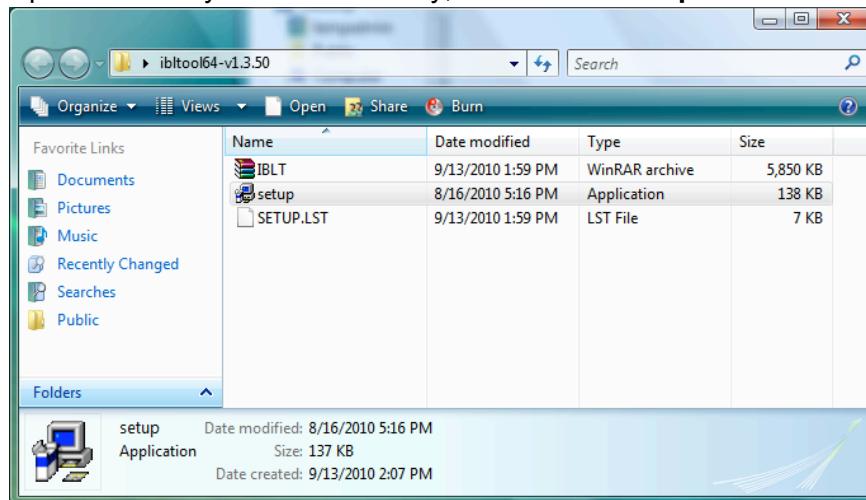
Installing the IBLTool

The requirements to run IBLTool on your computer are:

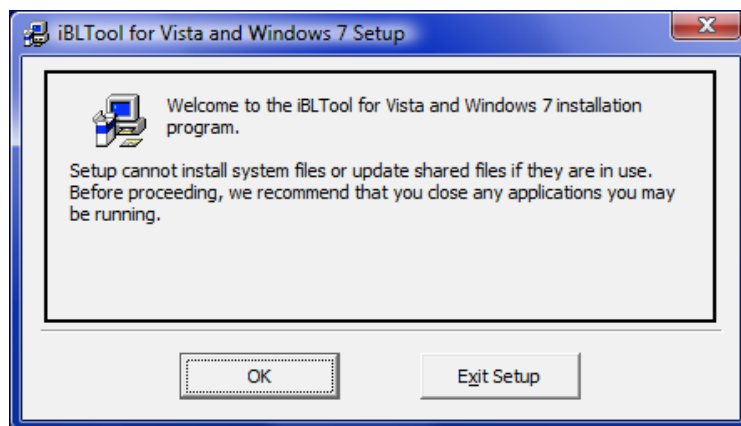
1. A Windows XP or newer machine, with the latest software updates; and
2. The installer package for the tool. There are separate installer packages depending on your version of Windows, so ensure that you have the correct one (### corresponds to the latest version number):
 - For Windows XP or Windows 2003: ibltool-###-xp.zip
 - For Windows Vista, Windows 2008, or Windows 7: ibltool-###-vista.zip

To install the tool:

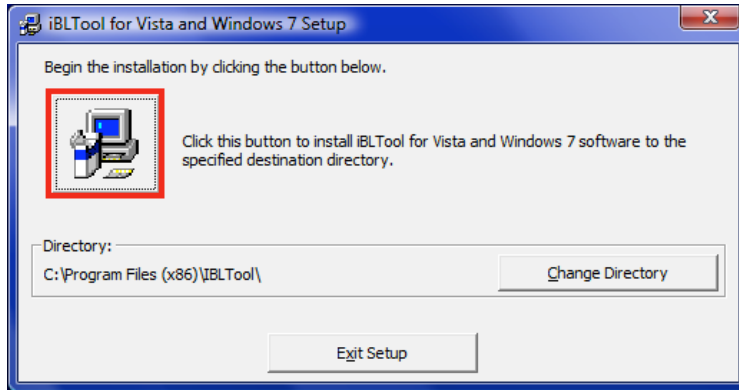
1. Unzip the installer package (the zip file) into any directory.
2. Open that newly created directory, and run the **setup.exe** file.



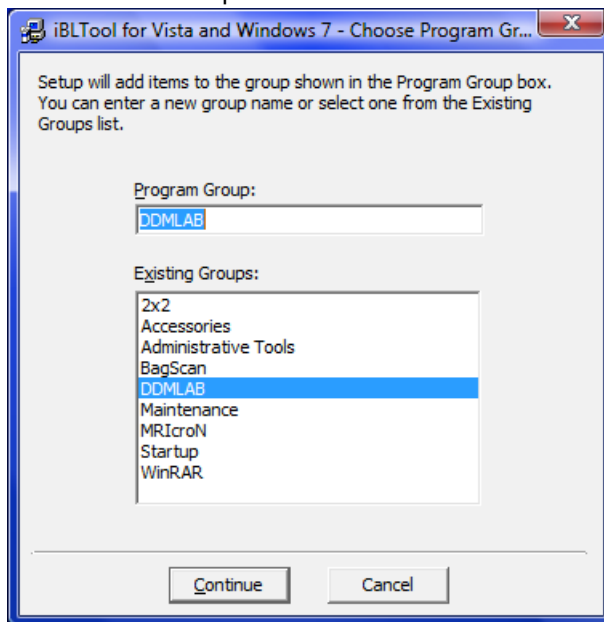
3. Click **OK** to continue with the installation.



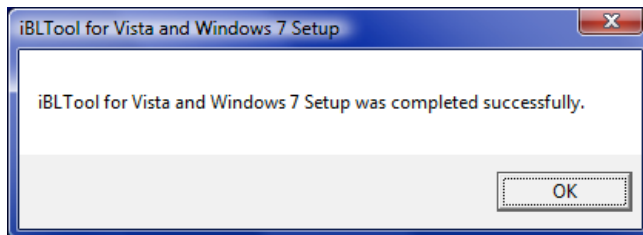
4. Click the computer icon on the top-left hand side of the installation window (marked in red below) to proceed with the default installation location.



5. Click **Continue** to proceed with the installation.



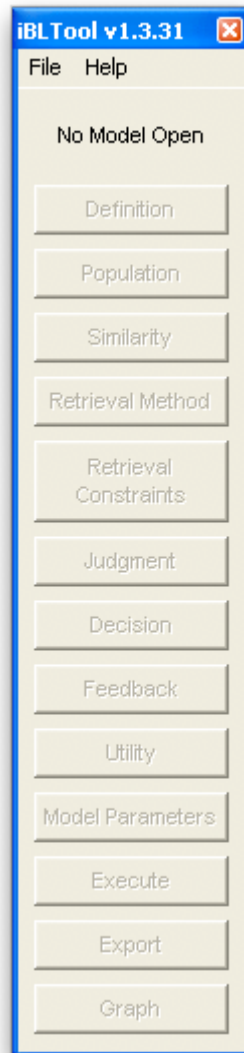
6. If an error message occurs, and notifies you:
C:\WINDOWS\System32\msvcrt.dll. The destination file is in use.
Please ensure that all other applications are closed.
Click the **Ignore** button, and click **Yes** to continue with the installation.
7. Click **OK** to exit the installer once the tool has been installed.



The tool and sample files are now available from the **Start Menu > DDMLAB** menu item.

To verify that the installation succeeded, start the IBLTool by going to the **Start**

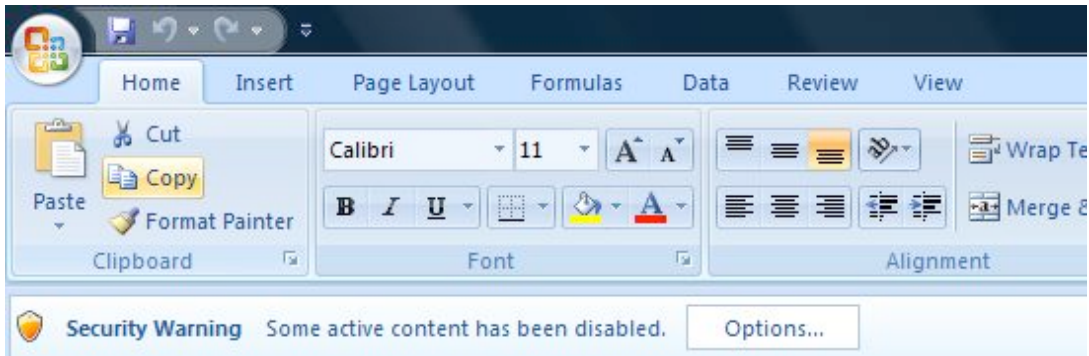
Menu > DDMLAB > IBLTool. If no error occurs, you should see the main navigation window of the tool:



To exit the tool, click **File > Exit**.

The tool comes with two sample model files: a binary choice task, and the Iowa Gambling Task. We will use the latter in the next chapter as an example on constructing a model from scratch.

You should also ensure that you are able to open and execute the Excel tasks themselves. To open the Iowa Gambling Task, go to **Start Menu > DDMLAB > Sample — Iowa Gambling Task**. In order to execute the task successfully, you will need to allow macro execution. If you have not allowed macro execution, you will see the following security warning upon opening the sample task in Excel 2007 and newer:



To enable the macros in Excel 2007 and newer:

1. Click the **Options...** button in the security warning as seen above.
2. In the pop-up window, choose the **Enable this content** option for all items:



3. Click **OK** to accept these options.

Excel versions earlier than 2003 will see the warning as a pop-up instead. To enable the macros, you should select to **Enable Macros** during the pop-up.